



**Bencos**  
Healthcare Solutions



**ADVANCED**  
**PRE ANALYTICAL SAMPLE**  
**COLLECTION & EXTRACTION KITS**

---

A streamlined pre-analytical portfolio designed to protect sample integrity from collection to analysis while reducing handling complexity.

## mSTABLE Blood Nucleic Acid Collection Series

Designed for whole blood preservation and molecular testing across routine transport and interim storage conditions.

- Blood DNA collection tubes
- Blood RNA collection tubes
- Blood cfDNA collection tubes

## mSTABLE Non-Invasive Sample Microbiome Collection Series

Designed for non-invasive sample preservation and molecular testing across routine transport and interim storage conditions.

- Saliva DNA/RNA collection tubes
- Fecal DNA/RNA collection tubes
- Oral/Buccal DNA/RNA collection tube

## mSTABLE Microbiome Collection Series

Preserve, store, and transport any type of biological specimens including cells, tissues, skin, tooth, and micro organisms at room temperature for reliable downstream analysis.

- Cervical Sample collection tubes
- Skin Microbiome Collection tubes
- Microbiome collection tubes

## RNASelect and Extraction Kits

RNASelect supports DNA/RNA stabilization across multiple biological sample types, while BEN extraction kits extend the workflow into downstream nucleic acid recovery.

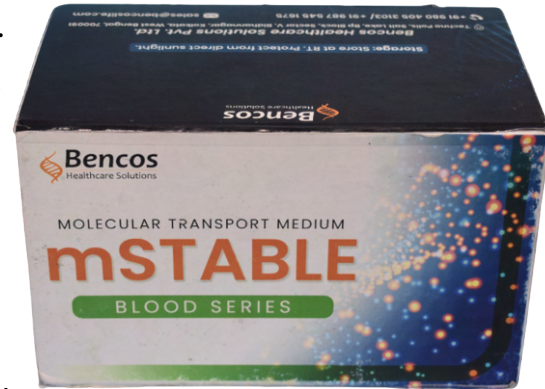
- Compatible with virus, bacteria, animal, tissue and soil workflows
- Suitable for all sensitive downstream applications such as qPCR and Next Generation Sequencing.

# mSTABLE Blood Nucleic Acid Collection Series

## mSTABLE Blood DNA Collection Tubes

A Molecular Transport Medium designed to preserve intracellular DNA from whole blood immediately at collection, enabling convenient storage, shipping and downstream molecular analysis without cold chain dependence.

- Immediate stabilization of intracellular DNA at collection.
- Ambient transport and storage with no cold chain or dry ice required.
- Up to 60 days of stability at room temperature.
- Flexible storage: up to 1 year at 4°C and up to 30 days at 30°-40°C.
- Compatible with common commercial DNA extraction kits.
- Suitable for RT-PCR, NGS and molecular diagnostic workflows.



# mSTABLE Blood RNA Collection Tubes

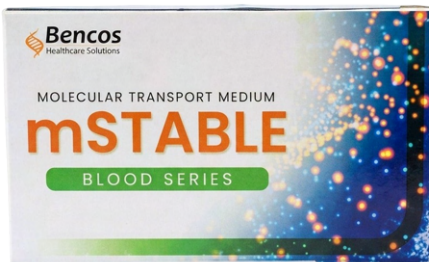
A Molecular Transport Medium designed to preserve intracellular RNA from whole blood immediately at collection, enabling convenient storage, shipping and downstream molecular analysis without cold chain.

- Immediate stabilization of intracellular RNA at collection.
- Ambient transport and storage with no cold chain or dry ice required.
- Up to 10 days of stability at room temperature.
- Flexible storage: up to 21 days at 4°C and up to 5 days at 30°–40°C.
- Compatible with common commercial RNA extraction kits.
- Suitable for RT-PCR, NGS and molecular diagnostic workflows.



# mSTABLE Blood cfDNA Collection Tubes

A Molecular Transport Medium designed to preserve cfDNA from whole blood during collection, transport and storage, enabling convenient shipping and downstream plasma based molecular analysis without cold chain dependence.



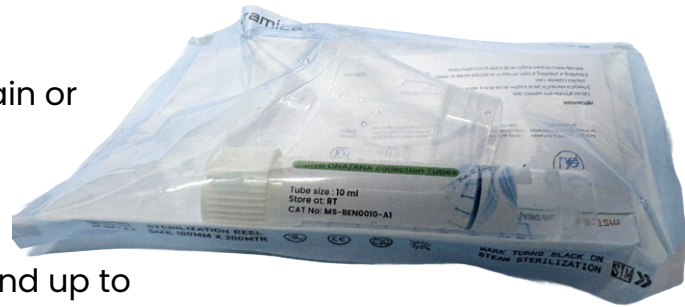
- Immediate stabilization of cfDNA at collection.
- Ambient transport and storage with no cold chain or dry ice required.
- Up to 10 days of stability at room temperature.
- Flexible storage: up to 5 days at 37°C.
- Supports direct plasma cfDNA isolation using common extraction kits.
- Suitable for RT-PCR, NGS and molecular diagnostic workflows.

# mSTABLE Microbiome Nucleic Acid Collection Series

## mSTABLE Saliva DNA/RNA Collection Tubes

A Molecular Transport Medium designed to stabilize microbial and viral DNA/RNA from saliva immediately at collection, enabling convenient ambient storage, shipping and downstream microbiome and molecular analysis.

- Immediate stabilization of microbial and viral DNA/RNA at collection.
- Ambient transport and storage with no cold chain or dry ice required.
- Up to 100 days of stability at room temperature.
- Flexible storage: Indefinite at  $-20^{\circ}\text{C}$  and below and up to 1 year at  $4^{\circ}\text{C}$ .
- Compatible with common commercial DNA/RNA extraction kits.
- Suitable for microbiome analysis and microbial/viral DNA/RNA testing workflows.



# mSTABLE Fecal DNA/RNA Collection Tubes

A Molecular Transport Medium designed to stabilize microbial and viral DNA/RNA from stool immediately at collection, enabling convenient ambient storage, shipping and downstream microbiome and molecular analysis.



- Immediate stabilization of microbial and viral DNA/RNA at collection.
- Ambient transport and storage with no cold chain or dry ice required.
- Up to 100 days of stability at room temperature.
- Flexible storage: Indefinite at  $-20^{\circ}\text{C}$  and below and up to 1 year at  $4^{\circ}\text{C}$ .
- Compatible with common commercial DNA/RNA extraction kits.
- Suitable for microbiome analysis and microbial/viral DNA/RNA testing workflows.



# mSTABLE Oral / buccal DNA/RNA Collection Tubes

A user friendly Molecular Transport Medium designed to collect, preserve and transport oral specimens containing nucleic acids, enabling convenient ambient temperature storage, shipping and downstream molecular analysis.

- Immediate stabilization of oral DNA/RNA at collection.
- Ambient transport and storage with no cold chain or dry ice required.
- Up to 30 days of stability at room temperature.
- Flexible storage: up to 1 year at 4°C and up to 14 days at 35°-40°C.
- Compatible with common commercial DNA/RNA extraction kits.
- Suitable for microbiome profiling, molecular diagnostics and genomics workflows.



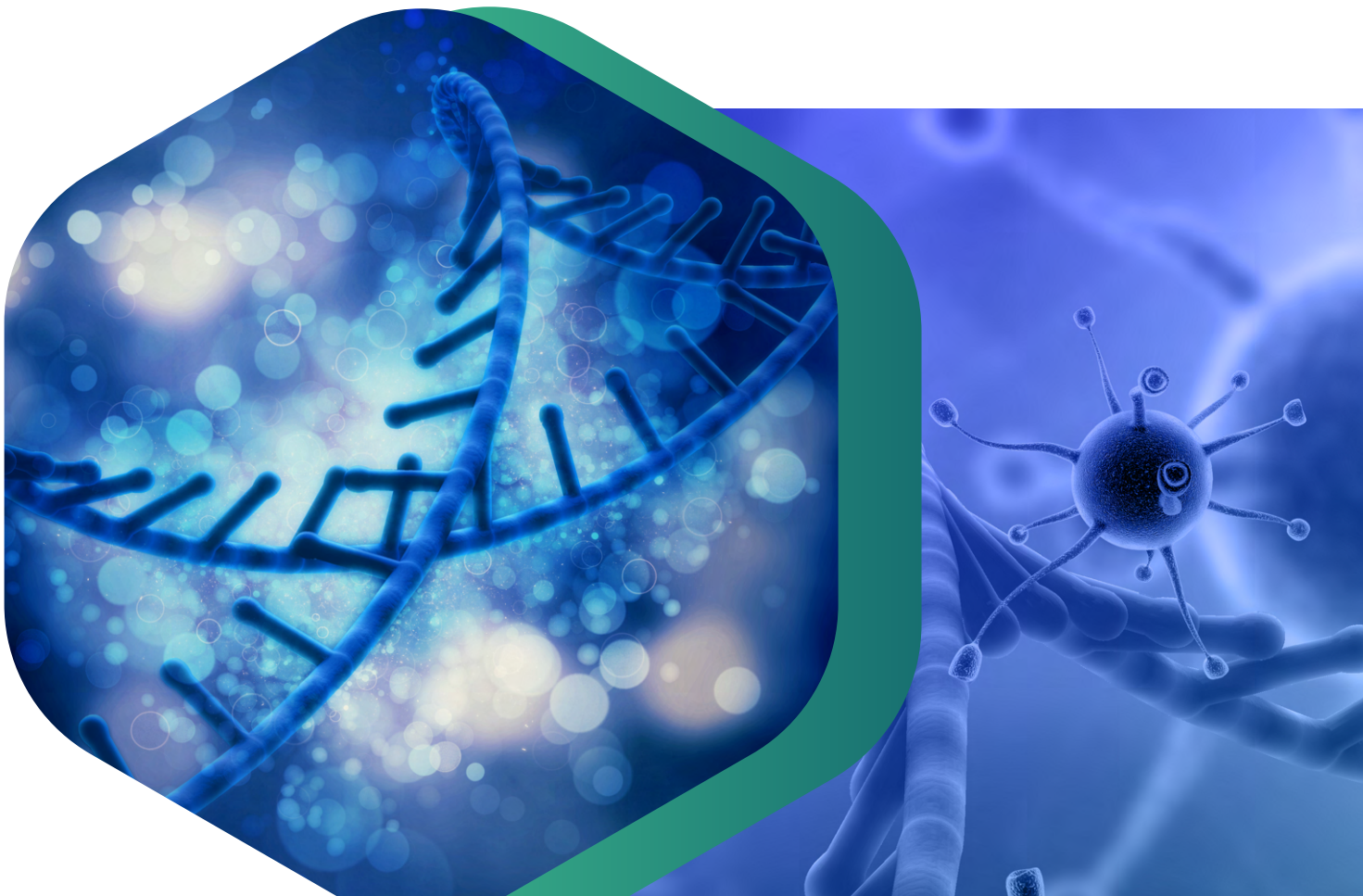
# mSTABLE Non Invasive Sample Microbiome Collection Series

## mSTABLE Cervical Sample Collection Tubes

A Molecular Transport Medium designed to collect, preserve and transport cervical specimens containing nucleic acids, enabling convenient ambient shipping and downstream molecular analysis without cold chain dependence.



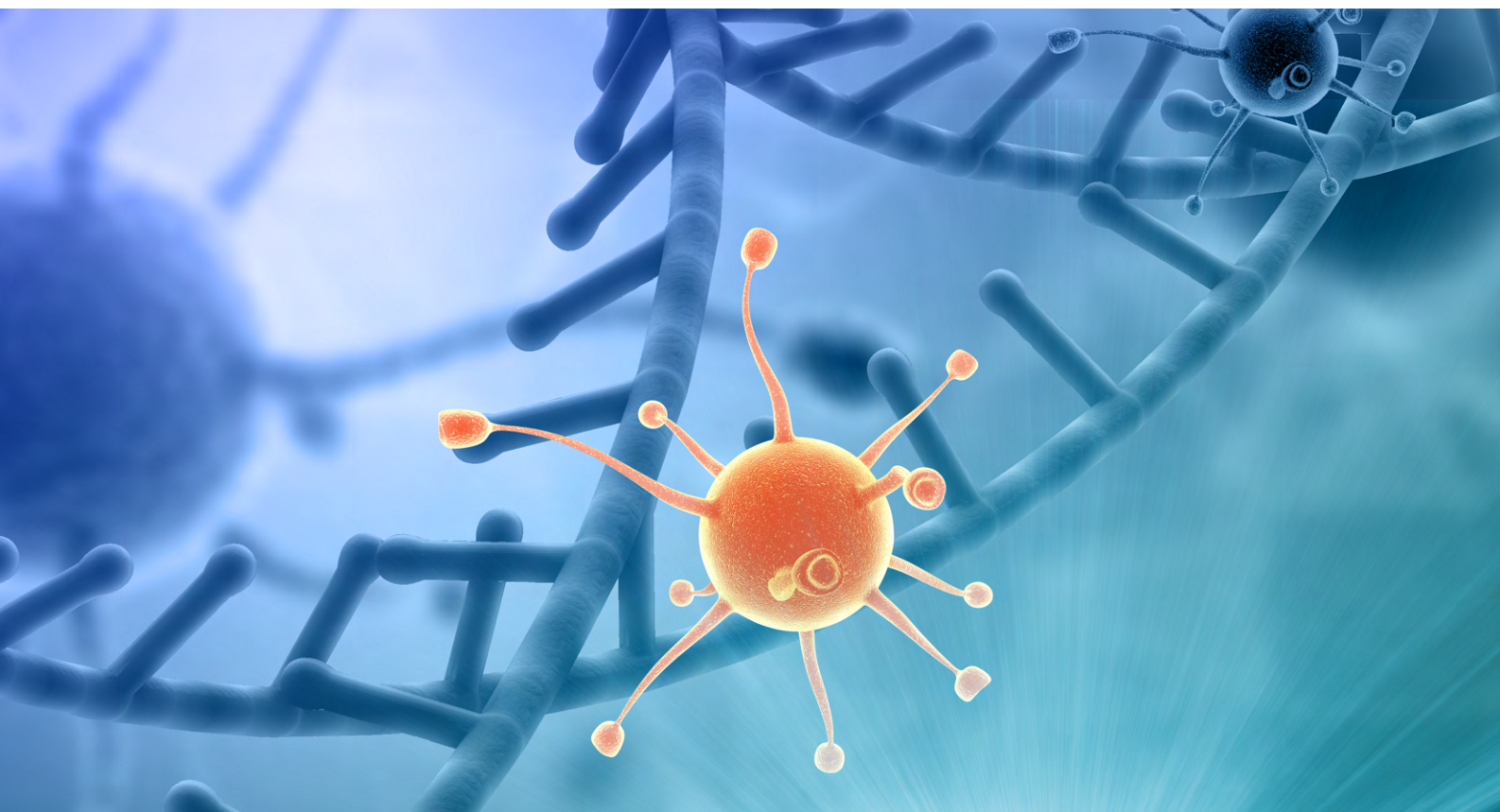
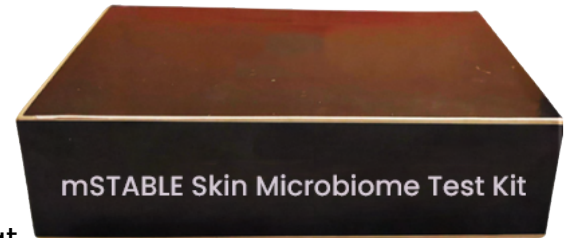
- Immediate stabilization of cervical sample nucleic acids at collection.
- Ambient transport and storage with no cold chain or dry ice required.
- Up to 30 days of stability at room temperature
- Flexible storage: up to 1 year at 4°C and up to 14 days at 35°-40°C.
- Compatible with common commercial DNA/RNA extraction kits.
- Suitable for molecular diagnostics, genomics and microbiome analysis workflows.



## mSTABLE Skin Microbiome Collection Tubes

A Molecular Transport Medium designed to collect, preserve and transport skin microbiome, enabling convenient ambient shipping and downstream molecular analysis without cold chain dependence.

- Immediate stabilization of skin microbiome at collection.
- Ambient transport and storage with no cold chain or dry ice required.
- Up to 30 days of stability at room temperature.
- Flexible storage: up to 1 year at 4°C and up to 14 days at 35°-40°C.
- Compatible with common commercial DNA/RNA extraction kits.
- Suitable for molecular diagnostics, genomics and microbiome analysis workflows.



## mSTABLE Microbiome Collection Tubes

A Molecular Transport Medium designed to collect, preserve and transport microbiome, enabling convenient ambient shipping and downstream molecular analysis without cold chain dependence.

- Immediate stabilization of any type of biological specimens including cells, tissues, skin, tooth, and microorganisms at collection.
- Ambient transport and storage with no cold chain or dry ice required.
- Up to 30 days of stability at room temperature.
- Flexible storage: up to 1 year at 4°C and up to 14 days at 35°-40°C.
- Compatible with common commercial DNA/RNA extraction kits.
- Suitable for molecular diagnostics, genomics and microbiome analysis workflows.



## RNA Select (RNA Later Equivalent)

A Molecular Transport Medium designed to stabilize RNA in any biological sample enabling ambient transport, storage and downstream molecular analysis while inactivating pathogens and arresting their growth.

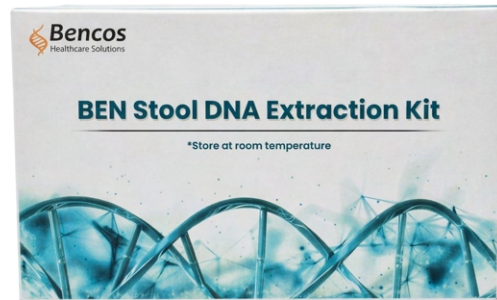


- Potent inactivation of pathogens and arrest of microbial growth.
- Ambient transport and storage with no cold chain or dry ice required.
- Up to 40 days of stability at room temperature.
- Flexible storage: up to 2 years at 4°C and up to 30 days at 35°-40°C.
- Compatible with common commercial RNA extraction kits.
- Suitable for downstream processing and analysis across diverse biological samples.

# BEN DNA/RNA Extraction Kits

Includes silica based spin column technology as well as magnetic bead-based kits (compatible with semi-automated magnetic stands) to efficiently isolate DNA/RNA from biological samples, eliminating the need for toxic phenol chloroform extraction.

The DNA extraction kits series includes kits specific for following sample types :



 Blood

 Stool

 Blood

 Stool

 Saliva

 Cell free

 Saliva

 FFPE

 FFPE

 Bacteria

 Bacteria

- Excellent DNA/RNA yield comparable to market leading kits.
- Maintains sample integrity even at high temperatures (37°-60°C).
- Highly suitable for molecular diagnostics, genomics and microbiome NGS workflows.



# Ordering Information

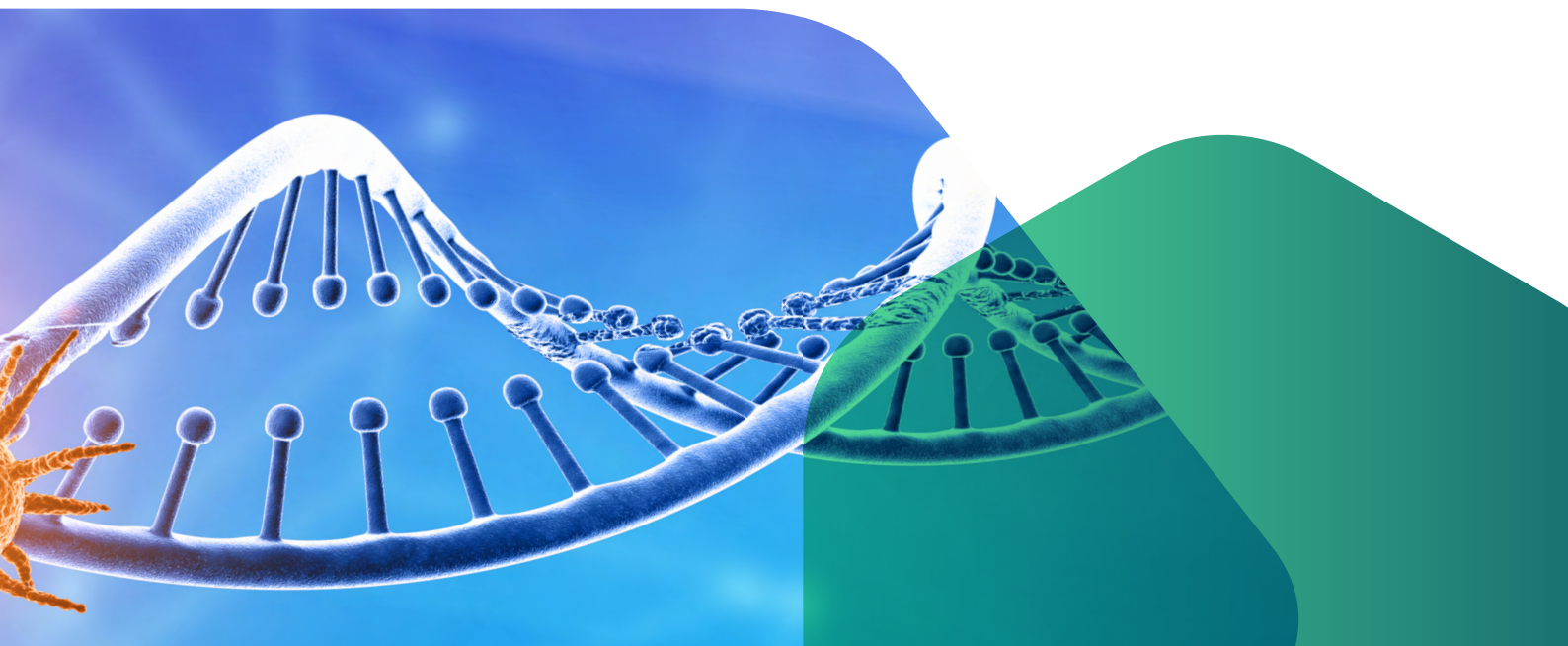
## Advanced Sample Collection & Preservation Solutions

CATALOGUE NO.	BENCOS PRODUCT	VOLUME	PACK SIZE
<b>MS-BEN002-A3</b>	mSTABLE Blood CF DNA Collection Tubes	0.75 mL preservative in 10 mL tubes	100 units/pack
<b>MS-BEND01-A3</b>	mSTABLE Blood DNA Collection Tubes	0.5 mL preservative in 4 mL tube	100 units/pack
<b>MS-BEND01-B3</b>	mSTABLE Blood DNA Collection Tubes	1.5 mL preservative in 10 mL tube	100 units/pack
<b>MS-BENR01-B3</b>	mSTABLE Blood RNA Collection Tubes	1.5 mL preservative in 10 mL tube	100 units/pack
<b>MS-BEN0010-A1</b>	mSTABLE Saliva DNA/RNA Collection Tube	2 mL preservative	25 units/pack
<b>MS-BEN0011-A2</b>	mSTABLE Oral / Buccal DNA/RNA Collection Tube	2 mL preservative	50 units/pack
<b>MS-BEN006-A2</b>	mSTABLE Fecal DNA/RNA Collection Tube	4 mL preservative	50 units/pack
<b>MS-BEN00-26</b>	mSTABLE Cervical Sample collection Tube	3 mL preservative	
<b>MS-BEN00-42</b>	mSTABLE Skin Microbiome Collection Tube	2 mL preservative	
<b>MS-BEN00-22</b>	mSTABLE Microbiome collection Tube	3 mL preservative	
<b>MS-BEN003-1</b>	RNAselect (RNAlater equivalent)	—	Each



## BEN DNA/RNA Extraction Kits

CATALOGUE NO.	BENCOS PRODUCT	PACK SIZE
<b>BEN-DE103-B</b>	BEN Bacterial DNA Extraction Kit	50 reactions/kit
<b>BEN-DE107-B</b>	BEN Blood DNA Extraction Kit	50 reactions/kit
<b>BEN-DE108-B</b>	BEN Cell free DNA Extraction Kit	50 reactions/kit
<b>BEN-DE110-B</b>	BEN Saliva DNA Extraction Kit	50 reactions/kit
<b>BEN-DE111-B</b>	BEN Stool DNA Extraction Kit	50 reactions/kit
<b>BEN-RE103-B</b>	BEN Bacterial RNA Extraction Kit	50 reactions/kit
<b>BEN-RE107-B</b>	BEN Blood RNA Extraction Kit	50 reactions/kit
<b>BEN-RE108-B</b>	BEN Stool RNA Extraction Kit	50 reactions/kit
<b>BEN-RE109-B</b>	BEN Saliva RNA Extraction Kit	50 reactions/kit





## **Bencos Healthcare Solutions Pvt. Ltd.**

AWFIS, 11th Floor, Technopolis Building, Salt Lake, BP Block, Sector V,  
Bidhannagar, Kolkata, West Bengal, 700091

**+91 980 405 3103 | +91 987 545 1675**

**[sales@bencoslife.com](mailto:sales@bencoslife.com)**

